



**孕龍科技股份有限公司**  
**Zeroplus Technology Co., Ltd.**

# SPECIFICATION

**MODEL: DSA Specification**

**PART NO : 031**

**VERSION : V1.03**

Approver		Check	Design
GM	PM		

Customer Confirm

\* Please fax the file to  
Zeroplus Technology after  
signing .

2F, NO.123, Jian Ba Rd,  
Chung Ho City, Taipei Hsian, R.O.C.

Tel:+886-2-66202225  
Fax:+886-2-22234362

FM07F1C



## Content

1	Software Installation .....	3
2	User Interface .....	7
3	Operating Instructions .....	9



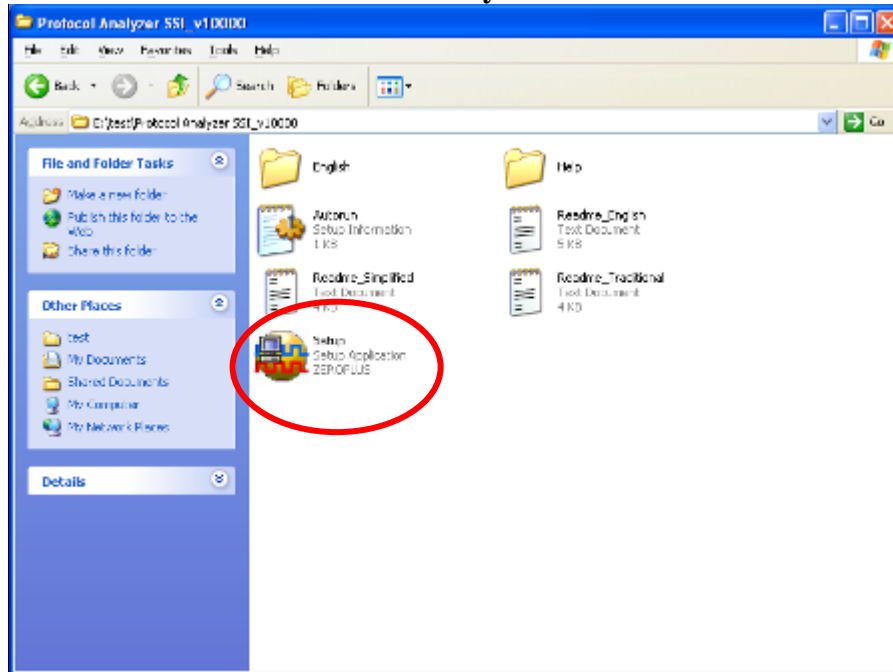
# 1 Software Installation

Please install the software as the following steps:

※ Remark: 1. The installation steps for all protocol analyzers are the same; you can complete the installation by following procedures. Following is an example on how to install protocol analyzer SSI.

※ Remark: 2. We won't have additional notice for you, when there is any modification of the module specification. If there is some unconformity caused by the module version upgrade, users should take the module software as the standard.

## STEP 1. Install Protocol Analyzer Module.

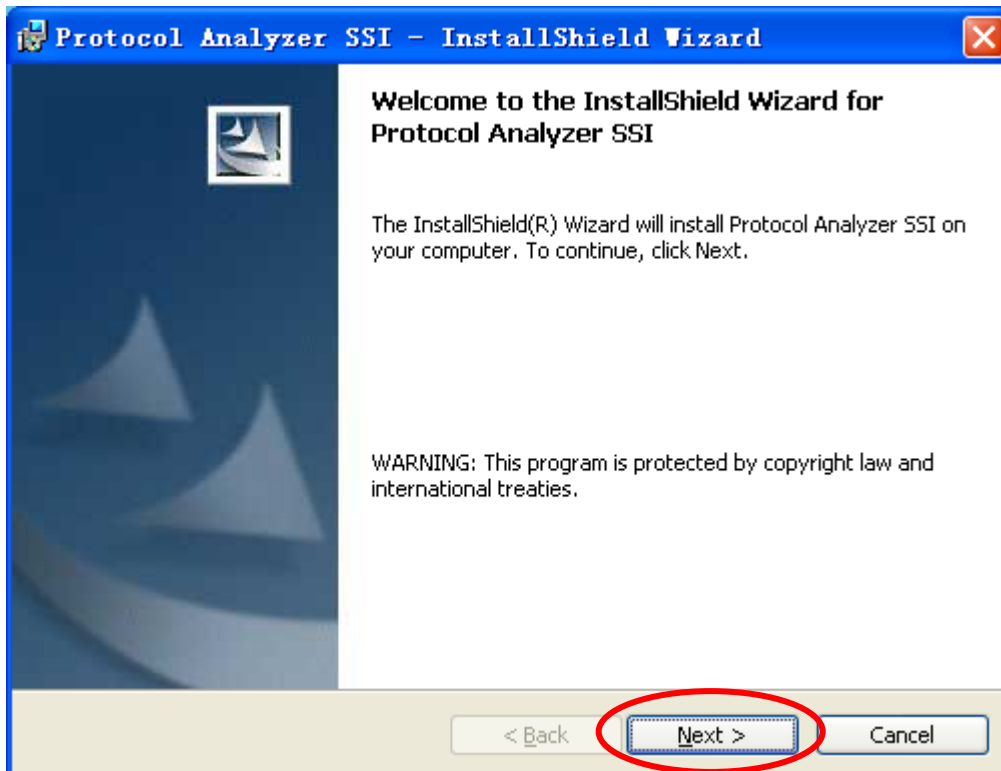


## STEP 2. Click **Install**.

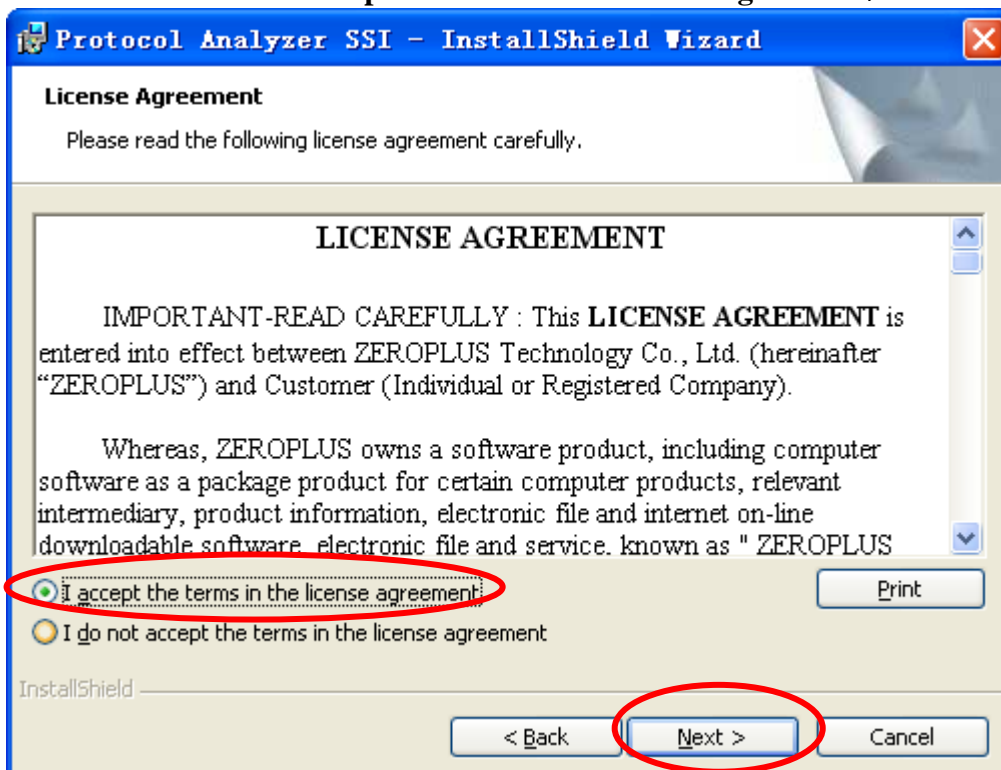




**STEP 3.** Click Next.



**STEP 4.** Select **I accept the terms in the license agreement**, and then press Next.





**STEP 5.** Fill in users' information in the below dialog box and click **Next**.

**Protocol Analyzer SSI - InstallShield Wizard**

**Customer Information**

Please enter your information.

User Name:  
sunshine

Organization:  
zeroplus

Install this application for:

☒ Anyone who uses this computer (all users)

☐ Only for me (sunshine)

InstallShield

< Back Next > Cancel

**STEP 6.** First, select **Complete** and then click **Next**.

**Protocol Analyzer SSI - InstallShield Wizard**

**Setup Type**

Choose the setup type that best suits your needs.

Please select a setup type.

☒ **Complete**  
All program features will be installed. (Requires the most disk space.)

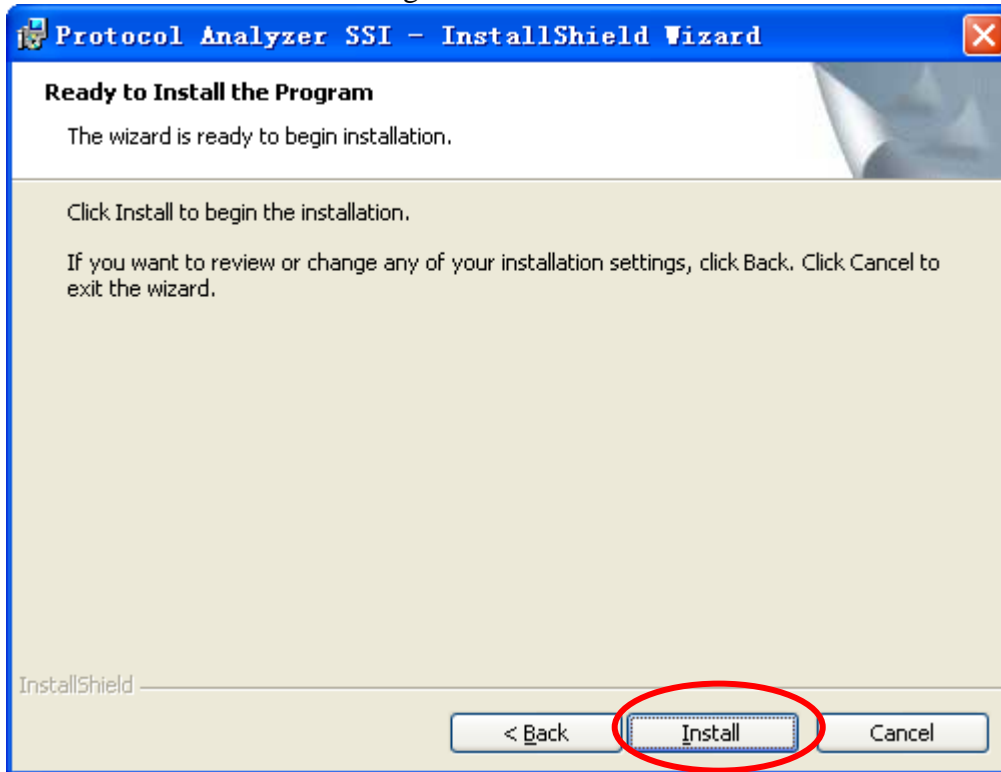
☐ **Custom**  
Choose which program features you want installed and where they will be installed. Recommended for advanced users.

InstallShield

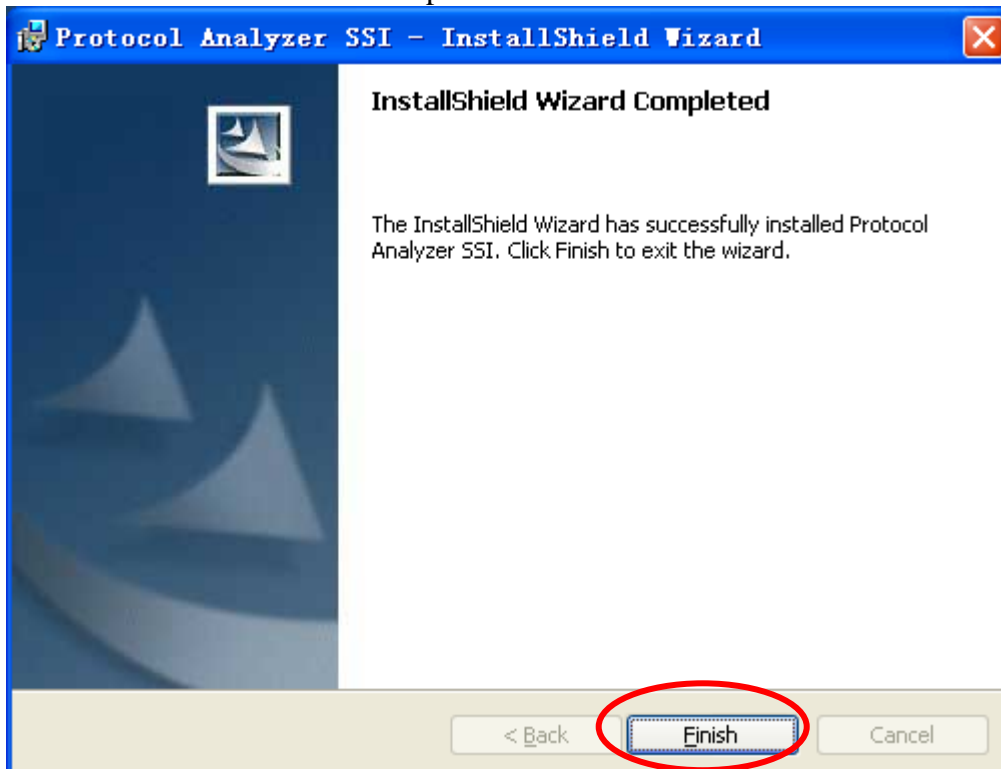
< Back Next > Cancel



**STEP 7.** Click **Install** to begin the installation.



**STEP 8.** Click **Finish** to complete the installation.

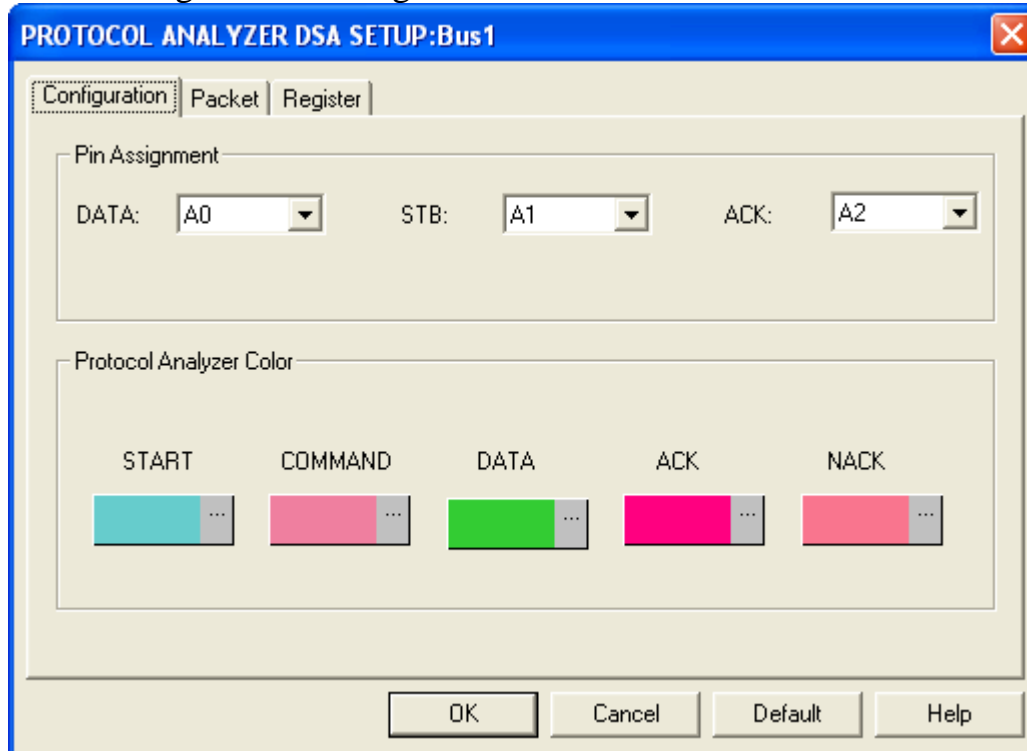




## 2 User Interface

Please refer to the below images to select options of setting **DSA** Module

### DSA Configuration Dialog Box



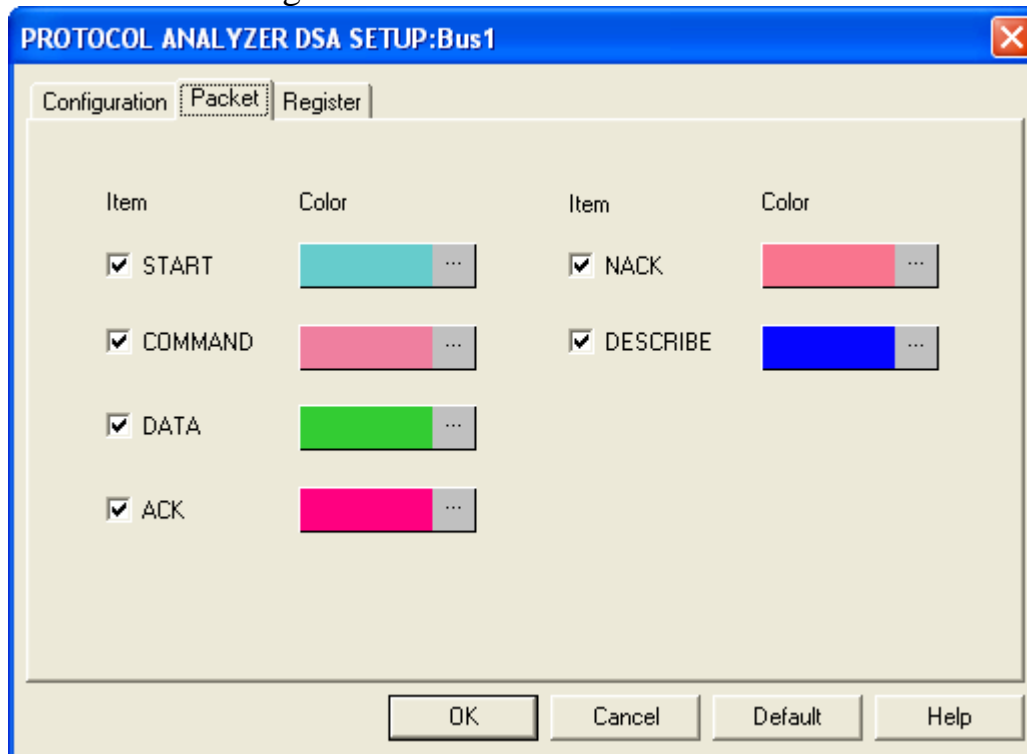
**DSA Pin Assignment:**

1. DATA is the data signal Line; its default is A0.
2. STB is the signal latch line; its default is A1.
3. ACK is the transmission confirmation line; its default is A2.

**Protocol Analyzer Color:** Set the colors for the protocol analyzer DSA.

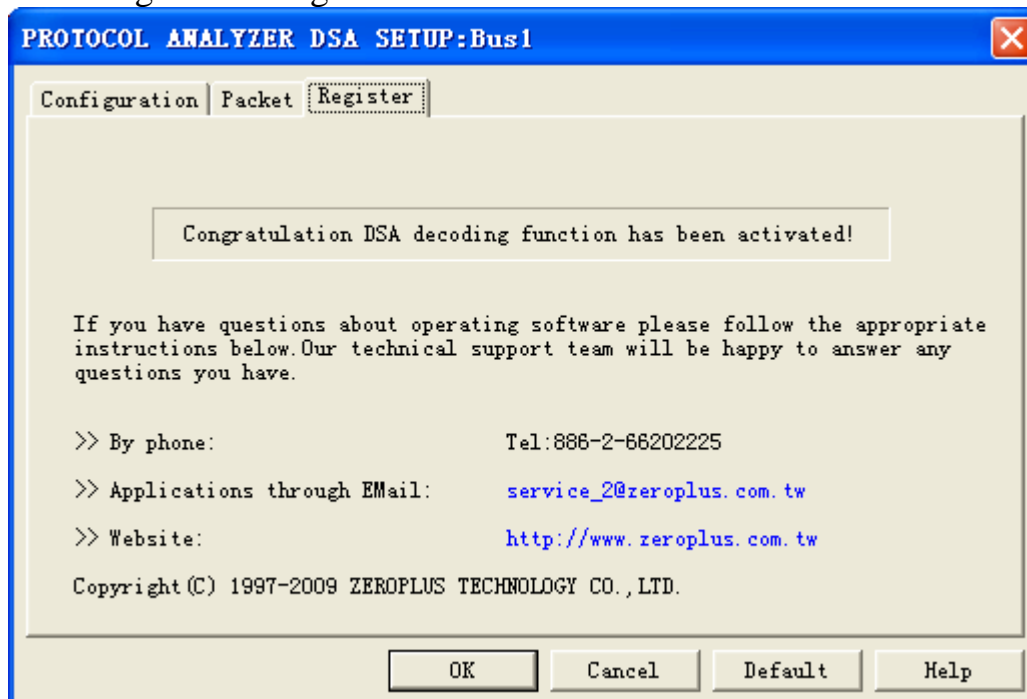


## DSA Packet Dialog Box



In the packet dialog box, users can vary the color of items.

## DSA Register Dialog Box



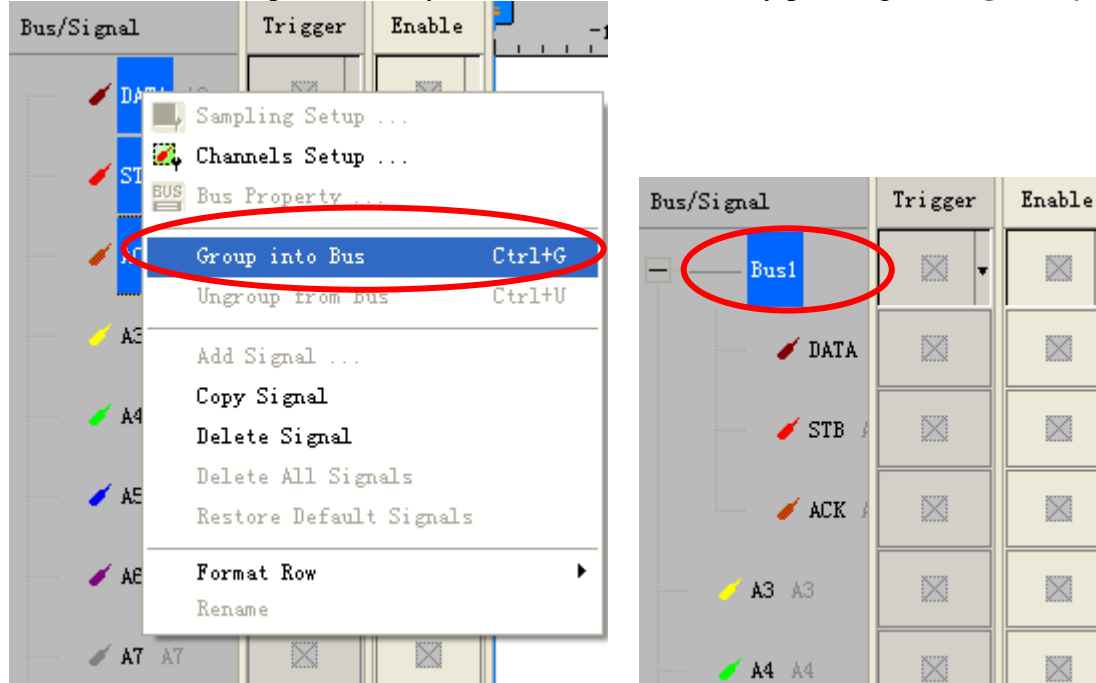
There is ZeroPlus company information details. If you have any questions about software operations, you can contact ZeroPlus by Telephone or Email.



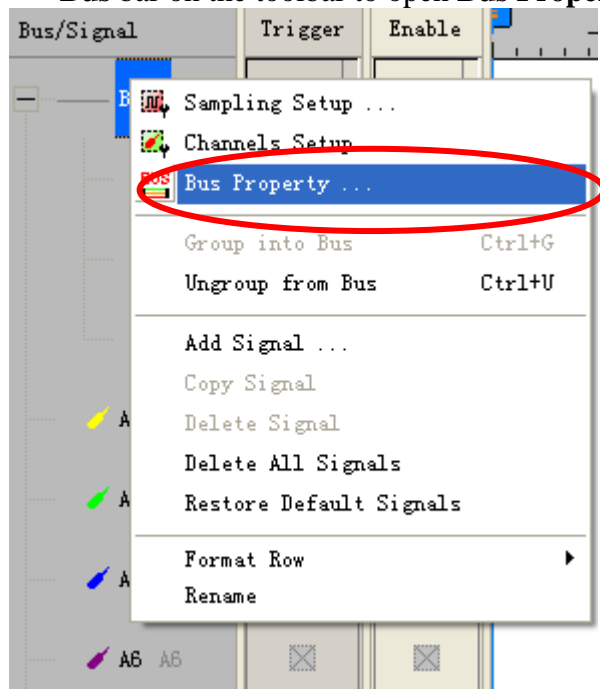


### 3 Operating Instructions

**STEP 1.** Group the unanalyzed channels into **Bus1** by pressing the **Right Key** on the mouse.

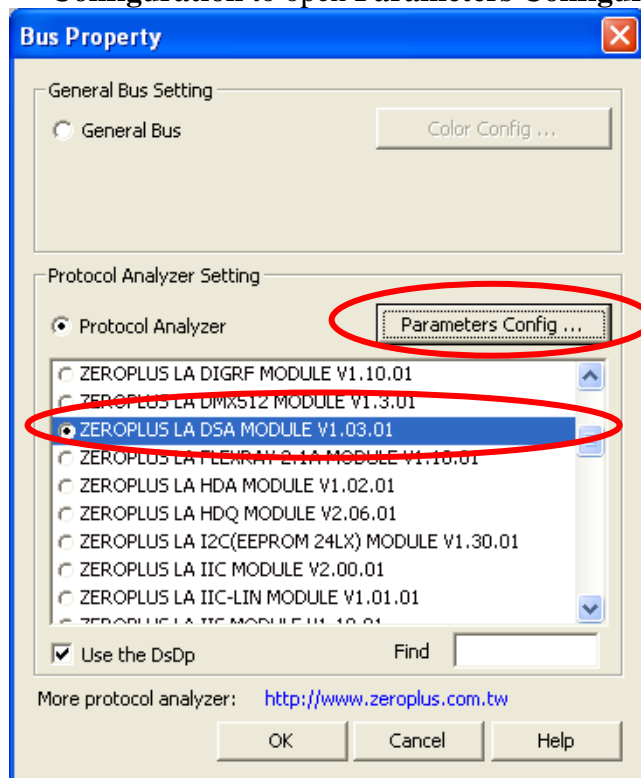


**STEP 2.** Select **Bus1**, press **Right key** on the mouse to list menu, then press **Bus Property** or **Bus** bar on the toolbar to open **Bus Property** dialog box.

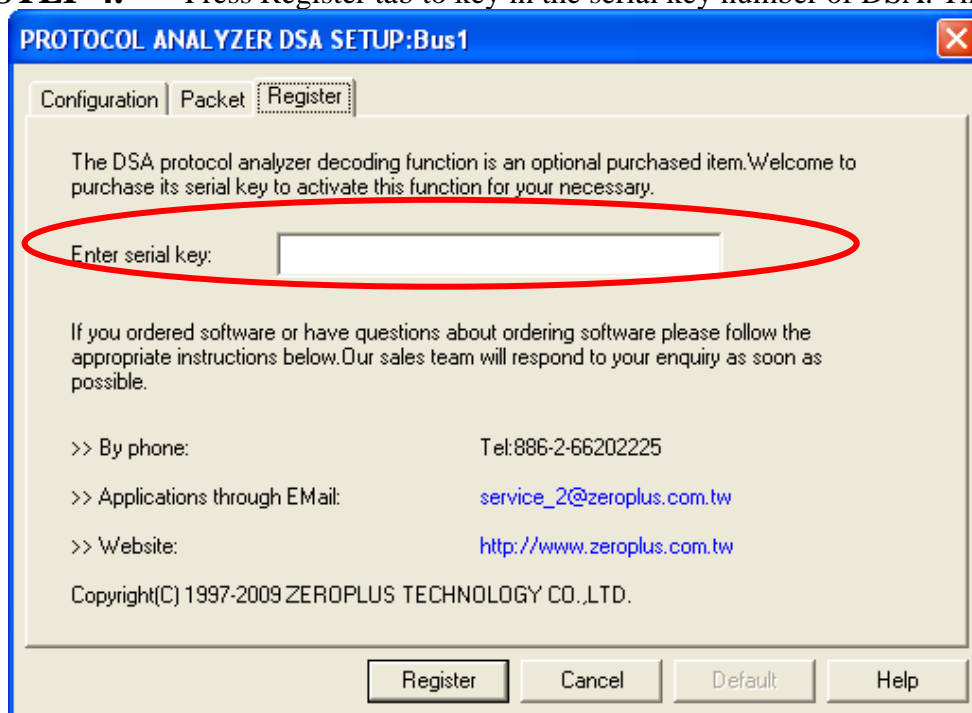




**STEP 3.** For Protocol Analyzer DSA Parameters Configuration, select Protocol Analyzer, and then choose **ZEROPLUS LA DSA MODULE V1.03.01**. Next click **Parameters Configuration** to open **Parameters Configuration** dialog box.

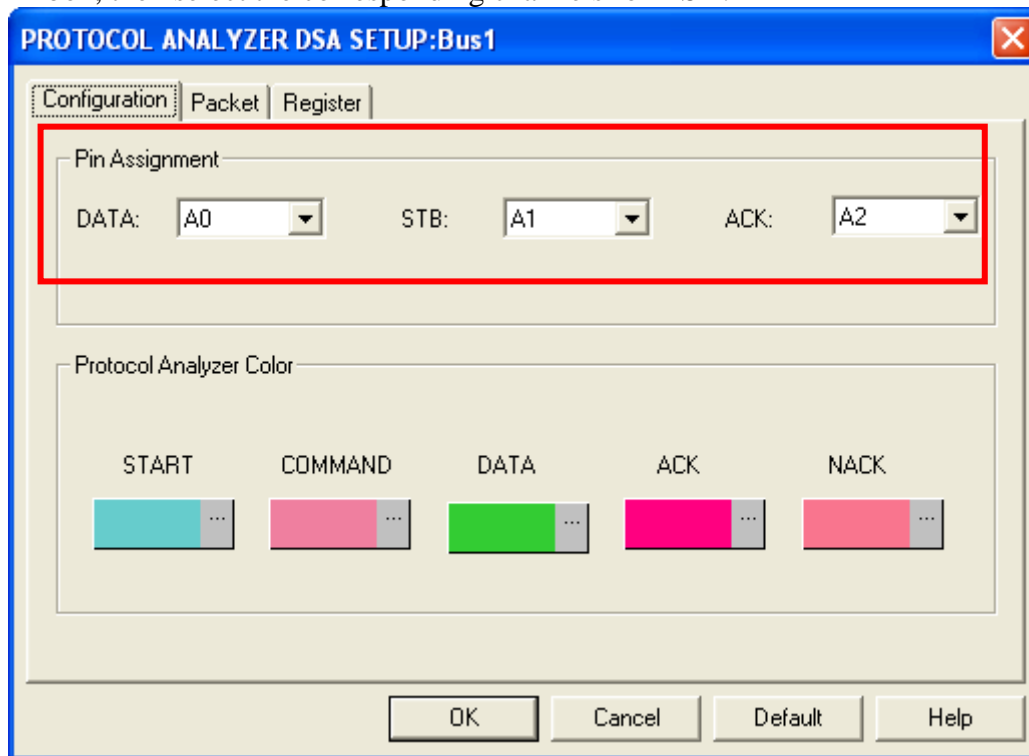


**STEP 4.** Press Register tab to key in the serial key number of DSA. Then, press **Register**.

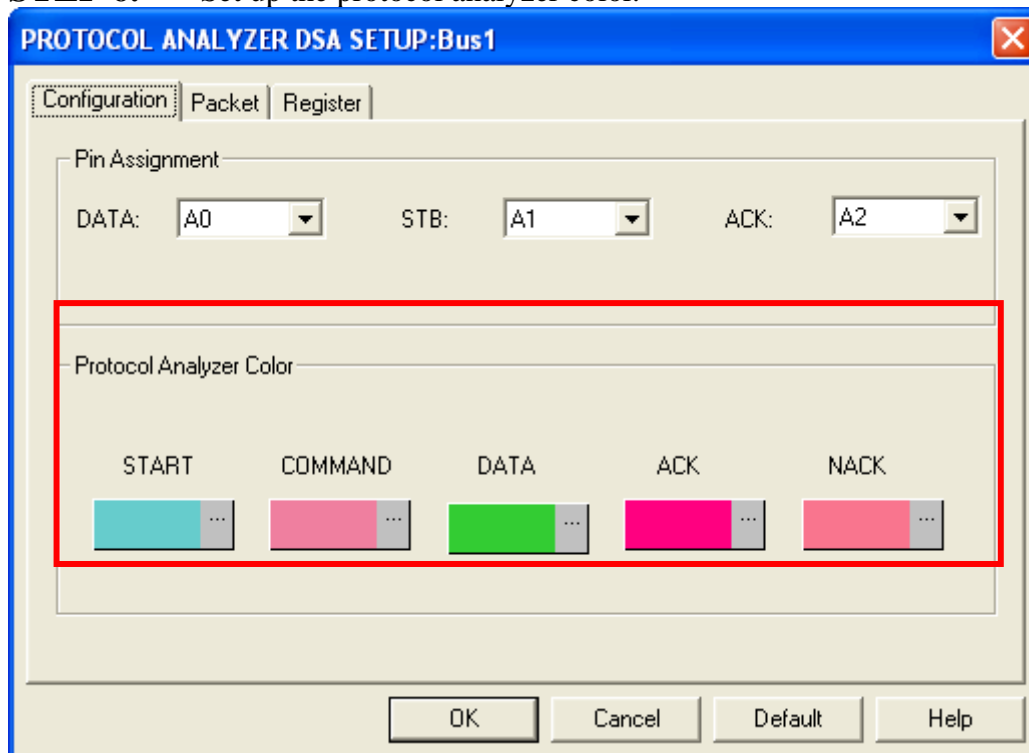




**STEP 5.** After completing register, click **Configuration** key to open the configuration dialog box, then select the corresponding channels for DSA.

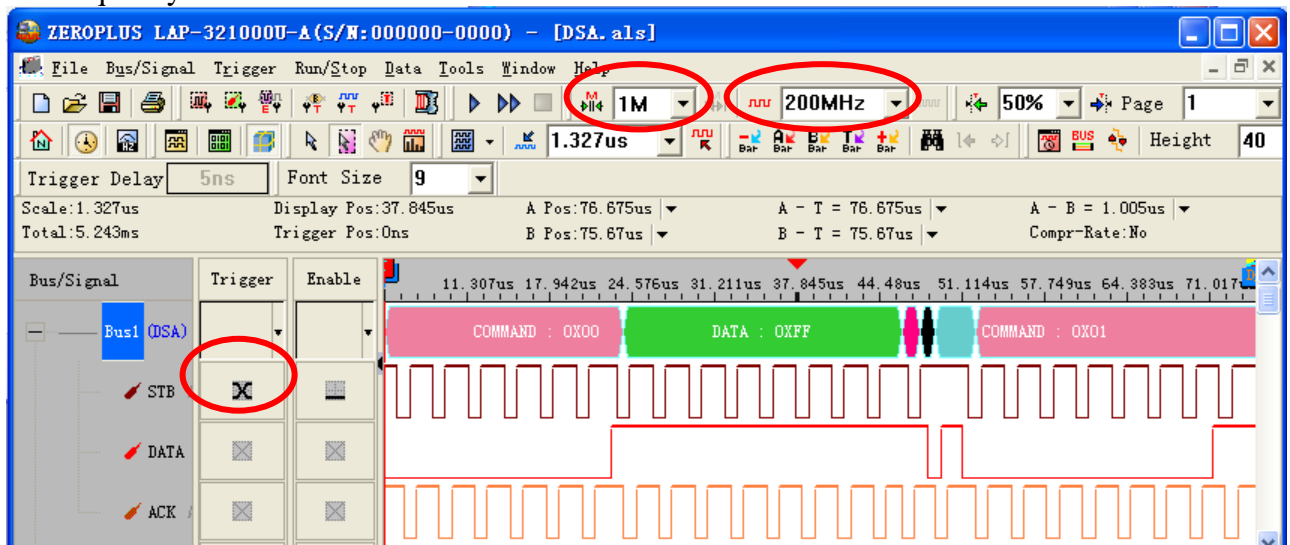


**STEP 6.** Set up the protocol analyzer color.





**STEP 7.** Following pictures show the completion of the protocol analyzer decoding and the packet list. The Trigger condition is set as Either Edge; the Memory depth is 1M; the Sampling frequency is 200MHz.



Following picture shows the waveform display with the packet list.

